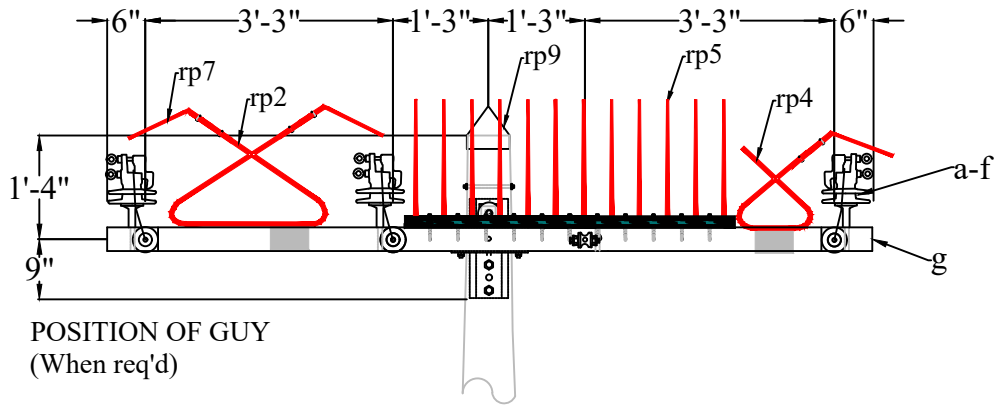
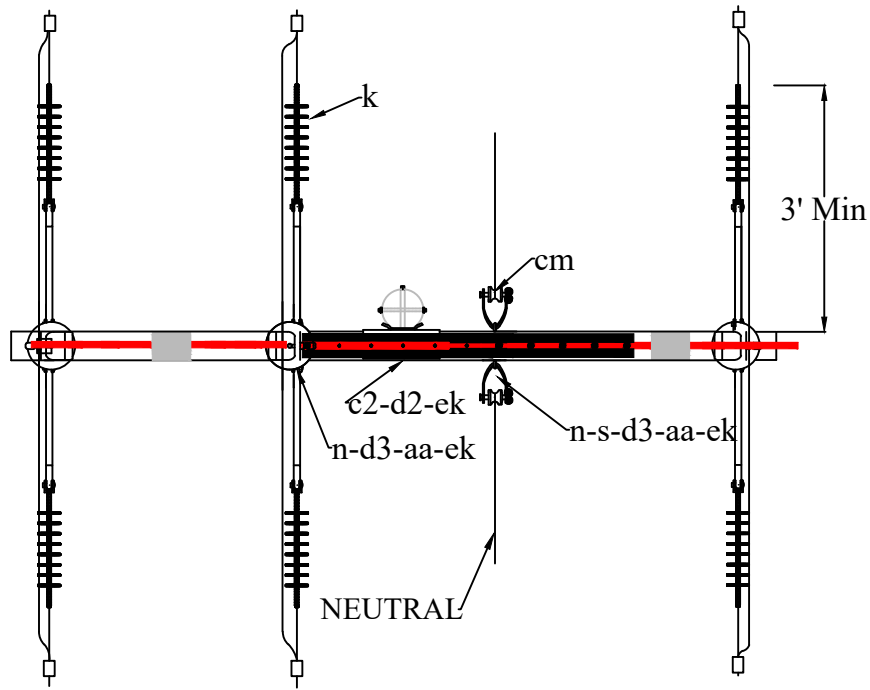


(see tying guide "VL1.2G")



ITEM	QTY	MATERIAL	PART #	ITEM	QTY	MATERIAL	PART #
a	3	Insulator, Clamp Type 25kV	4311	aa	4	Eyenuets, 5/8"	4340
c	1	Machine Bolt, 5/8"	9372	av	24'	Jumper, Insulated	3116
c2	2	Machine Bolt, 3/4"	9373	cm	2	Insulator Spool	4270
d	6	Washer, Square 2" X 2"	9091	ek	5	Locknuts, 5/8"	9096
d2	2	Washer, Curved	9093	ek	2	Locknuts, 3/4"	9097
f	3	Pins, Crossarm	4370	eu	6	Extension Link	4281
g	1	Crossarm, Fiberglass 10'	4118	rp2	1	Perch Guard, 24"	4764
k	6	Insulator Expoxilator, 18.75"	4280	rp4	1	Perch Guard, 12"	4760
l	6	Deadend Clamp	2120	rp5	2	Zena Spikes, 30"	4780
n	2	D.A. Bolt 5/8"	9363	rp7	3	Perch Extender	4769
s	2	Clevis, Swinging	2160	rp9	1	Zena Pole Cap	4743

**NOTES**

1. Maximum line angle may be increased to 15° by installing anchor shackles, item "bo" to (horizontal) eyenuets and installing side guys as required.
2. Allowable unbalanced longitude tension: 1,000 lbs./conductor.
3. Maximum line angle: 5° (see note 2).
4. Double arming bolt, item "n" and eyenut, item "aa", may be replaced with eyebolt, item "dy".

**DOUBLE DEADEND 10' CROSS ARM  
3 PHASE HIGH NEUTRAL 24.9/14.4 kV**

RUS  
01/22/13  
Rev. 0



VC6.52RG